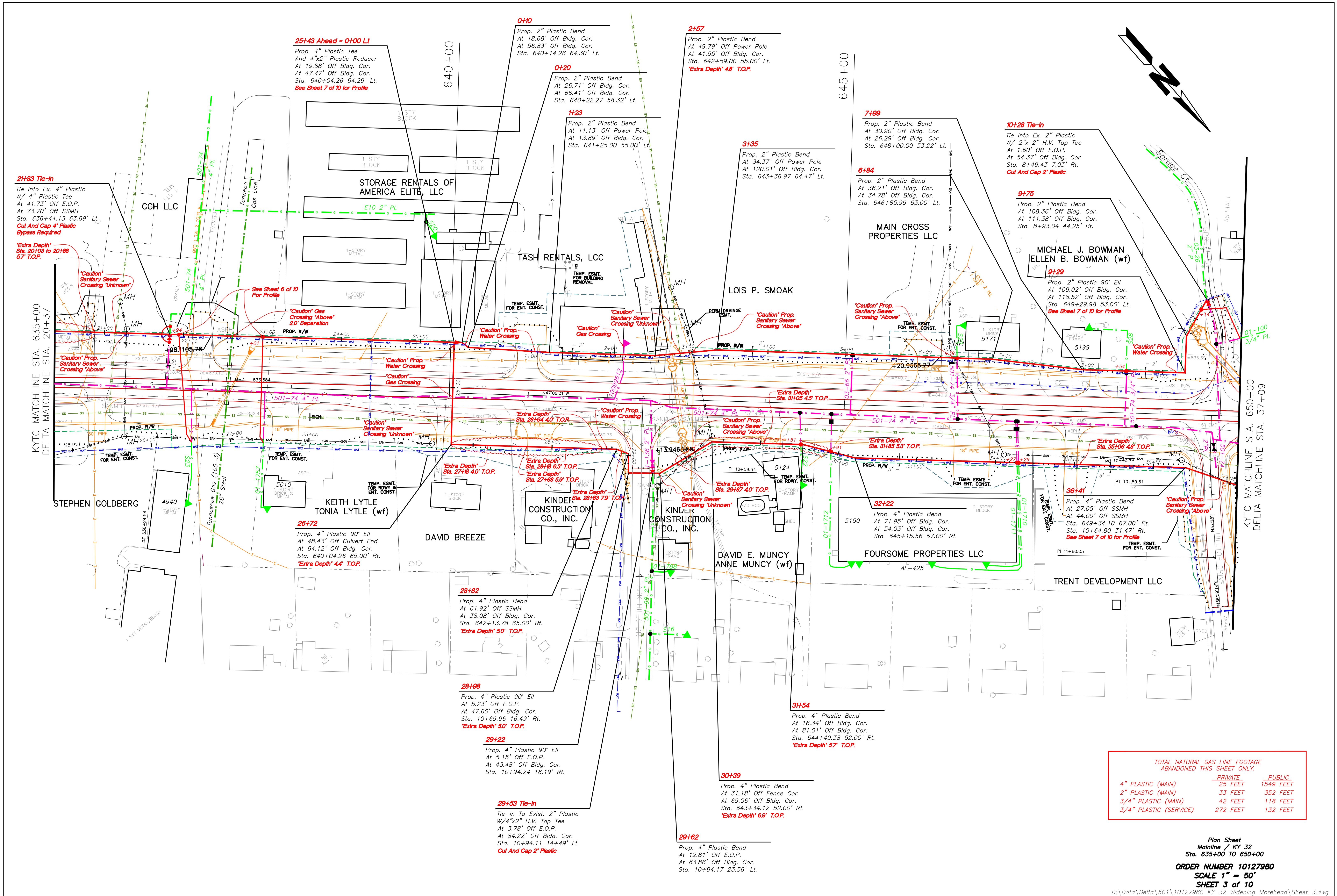


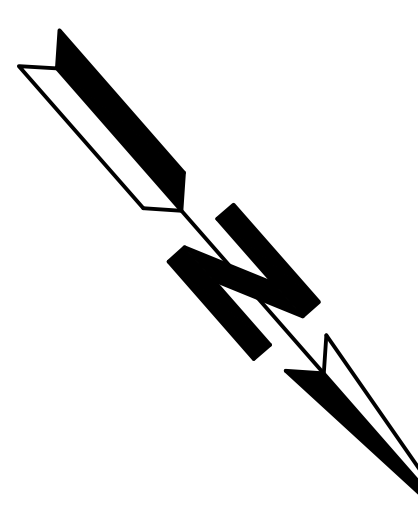
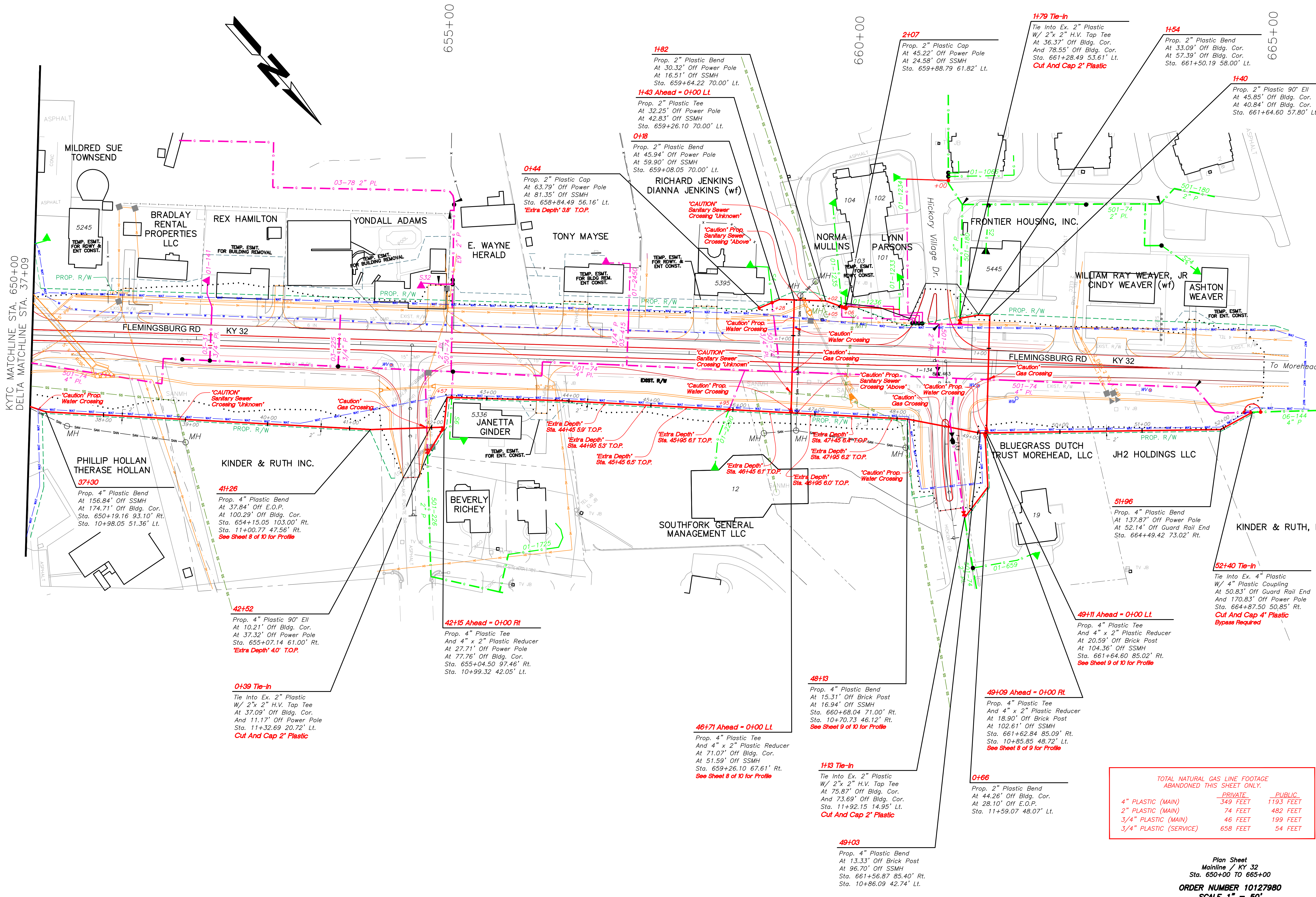
TOTAL NATURAL GAS LINE FOOTAGE ABANDONED THIS SHEET ONLY.		
	PRIVATE	PUBLIC
4" PLASTIC (MAIN)	1644 FEET	290 FEET
2" PLASTIC (MAIN)	0 FEET	748 FEET
3/4" PLASTIC (MAIN)	0 FEET	31 FEET
3/4" PLASTIC (SERVICE)	305 FEET	20 FEET

Plan Sheet  
Mainline / KY 32  
Sta. 620+00 TO 635+00  
ORDER NUMBER 10127980  
SCALE 1" = 50'  
SHEET 2 of 10



TOTAL NATURAL GAS LINE FOOTAGE ABANDONED THIS SHEET ONLY.		
	PRIVATE	PUBLIC
4" PLASTIC (MAIN)	25 FEET	1549 FEET
2" PLASTIC (MAIN)	33 FEET	352 FEET
3/4" PLASTIC (MAIN)	42 FEET	118 FEET
3/4" PLASTIC (SERVICE)	272 FEET	132 FEET

Plan Sheet  
Mainline / KY 32  
Sta. 635+00 TO 650+00  
ORDER NUMBER 10127980  
SCALE 1" = 50'  
SHEET 3 of 10



KYTC MATCHLINE STA. 650+00  
DELTA MATCHLINE STA. 37+09

655+00

660+00

665+00

MILDRED SUE TOWNSEND

BRADLEY RENTAL PROPERTIES LLC

REX HAMILTON

YONDALL ADAMS

E. WAYNE HERALD

TONY MAYSE

RICHARD JENKINS  
DIANNA JENKINS (wf)

NORMA MULLINS

LYNN PARSONS

FRONTIER HOUSING, INC.

WILLIAM RAY WEAVER, JR  
CINDY WEAVER (wf)

ASHTON WEAVER

FLEMINGSBURG RD  
KY 32

FLEMINGSBURG RD  
KY 32

FLEMINGSBURG RD  
KY 32

FLEMINGSBURG RD  
KY 32

FLEMINGSBURG RD  
KY 32

FLEMINGSBURG RD  
KY 32

FLEMINGSBURG RD  
KY 32

FLEMINGSBURG RD  
KY 32

FLEMINGSBURG RD  
KY 32

PHILLIP HOLLAN  
THERASE HOLLAN

KINDER & RUTH INC.

JANETTA GINDER

BEVERLY RICHEY

SOUTHFORK GENERAL MANAGEMENT LLC

12

19

BLUEGRASS DUTCH TRUST MOREHEAD, LLC

JH2 HOLDINGS LLC

KINDER & RUTH, INC.

37+30  
Prop. 4" Plastic Bend  
At 156.84' Off SSMH  
At 174.71' Off Bldg. Cor.  
Sta. 650+19.16 93.10' Rt.  
Sta. 10+98.05 51.36' Lt.

41+26  
Prop. 4" Plastic Bend  
At 37.84' Off E.O.P.  
At 100.29' Off Bldg. Cor.  
Sta. 654+15.05 103.00' Rt.  
Sta. 11+00.77 47.56' Rt.  
See Sheet 8 of 10 for Profile

42+52  
Prop. 4" Plastic 90° Ell  
At 10.21' Off Bldg. Cor.  
At 37.32' Off Power Pole  
Sta. 655+07.14 61.00' Rt.  
Extra Depth' 40' T.O.P.

0+39 Tie-In  
Tie Into Ex. 2" Plastic  
W/ 2"x 2" H.V. Tap Tee  
At 37.09' Off Bldg. Cor.  
And 11.17' Off Power Pole  
Sta. 11+32.69 20.72' Lt.  
Cut And Cap 2" Plastic

42+15 Ahead = 0+00 Rt  
Prop. 4" Plastic Tee  
And 4" x 2" Plastic Reducer  
At 27.71' Off Power Pole  
At 77.76' Off Bldg. Cor.  
Sta. 655+04.50 97.46' Rt.  
Sta. 10+99.32 42.05' Lt.

Extra Depth' Sta. 44+45 5.9' T.O.P.  
Extra Depth' Sta. 44+95 5.9' T.O.P.  
Extra Depth' Sta. 45+45 6.5' T.O.P.

Extra Depth' Sta. 46+45 6.1' T.O.P.  
Extra Depth' Sta. 46+95 6.2' T.O.P.  
Extra Depth' Sta. 46+95 6.0' T.O.P.

46+71 Ahead = 0+00 Lt  
Prop. 4" Plastic Tee  
And 4" x 2" Plastic Reducer  
At 71.07' Off Bldg. Cor.  
At 51.59' Off SSMH  
Sta. 659+26.10 67.61' Rt.  
See Sheet 8 of 10 for Profile

48+13  
Prop. 4" Plastic Bend  
At 15.31' Off Brick Post  
At 16.94' Off SSMH  
Sta. 660+68.04 71.00' Rt.  
Sta. 10+70.73 46.12' Rt.  
See Sheet 9 of 10 for Profile

49+03  
Prop. 4" Plastic Bend  
At 13.33' Off Brick Post  
At 96.70' Off SSMH  
Sta. 661+56.87 85.40' Rt.  
Sta. 10+86.09 42.74' Lt.

0+44  
Prop. 2" Plastic Cap  
At 63.79' Off Power Pole  
At 81.35' Off SSMH  
Sta. 658+84.49 56.16' Lt.  
Extra Depth' 38' T.O.P.

0+48  
Prop. 2" Plastic Bend  
At 45.94' Off Power Pole  
At 59.90' Off SSMH  
Sta. 659+08.05 70.00' Lt.

0+82  
Prop. 2" Plastic Tee  
At 32.25' Off Power Pole  
At 42.83' Off SSMH  
Sta. 659+26.10 70.00' Lt.

0+88  
Prop. 2" Plastic Bend  
At 45.94' Off Power Pole  
At 59.90' Off SSMH  
Sta. 659+08.05 70.00' Lt.

0+96  
Prop. 2" Plastic Cap  
At 30.32' Off Power Pole  
At 16.51' Off SSMH  
Sta. 659+64.22 70.00' Lt.

1+82  
Prop. 2" Plastic Bend  
At 45.22' Off Power Pole  
At 24.58' Off SSMH  
Sta. 659+88.79 61.82' Lt.

1+43 Ahead = 0+00 Lt  
Prop. 2" Plastic Tee  
At 32.25' Off Power Pole  
At 42.83' Off SSMH  
Sta. 659+26.10 70.00' Lt.

1+79 Tie-In  
Tie Into Ex. 2" Plastic  
W/ 2"x 2" H.V. Tap Tee  
At 36.37' Off Bldg. Cor.  
And 78.55' Off Bldg. Cor.  
Sta. 661+28.49 53.61' Lt.  
Cut And Cap 2" Plastic

1+84  
Prop. 2" Plastic Bend  
At 33.09' Off Bldg. Cor.  
At 57.39' Off Bldg. Cor.  
Sta. 661+50.19 58.00' Lt.

1+40  
Prop. 2" Plastic 90° Ell  
At 45.85' Off Bldg. Cor.  
At 40.84' Off Bldg. Cor.  
Sta. 661+64.60 57.80' Lt.

49+11 Ahead = 0+00 Lt  
Prop. 4" Plastic Tee  
And 4" x 2" Plastic Reducer  
At 20.59' Off Brick Post  
At 104.36' Off SSMH  
Sta. 661+64.60 85.02' Rt.  
See Sheet 9 of 10 for Profile

49+09 Ahead = 0+00 Rt  
Prop. 4" Plastic Tee  
And 4" x 2" Plastic Reducer  
At 18.90' Off Brick Post  
At 102.61' Off SSMH  
Sta. 661+62.84 85.09' Rt.  
Sta. 10+85.85 48.72' Lt.  
See Sheet 8 of 9 for Profile

49+03  
Prop. 4" Plastic Bend  
At 13.33' Off Brick Post  
At 96.70' Off SSMH  
Sta. 661+56.87 85.40' Rt.  
Sta. 10+86.09 42.74' Lt.

0+66  
Prop. 2" Plastic Bend  
At 44.26' Off E.O.P.  
At 28.10' Off E.O.P.  
Sta. 11+59.07 48.07' Lt.

51+96  
Prop. 4" Plastic Bend  
At 137.87' Off Power Pole  
At 52.14' Off Guard Rail End  
Sta. 664+49.42 73.02' Rt.

52+40 Tie-In  
Tie Into Ex. 4" Plastic  
W/ 4" Plastic Coupling  
At 50.83' Off Guard Rail End  
And 170.83' Off Power Pole  
Sta. 664+87.50 50.85' Rt.  
Cut And Cap 4" Plastic  
Bypass Required

TOTAL NATURAL GAS LINE FOOTAGE ABANDONED THIS SHEET ONLY.		
	PRIVATE	PUBLIC
4" PLASTIC (MAIN)	349 FEET	1193 FEET
2" PLASTIC (MAIN)	74 FEET	482 FEET
3/4" PLASTIC (MAIN)	46 FEET	199 FEET
3/4" PLASTIC (SERVICE)	658 FEET	54 FEET

Plan Sheet  
Mainline / KY 32  
Sta. 650+00 TO 665+00  
ORDER NUMBER 10127980  
SCALE 1" = 50'  
SHEET 4 of 10